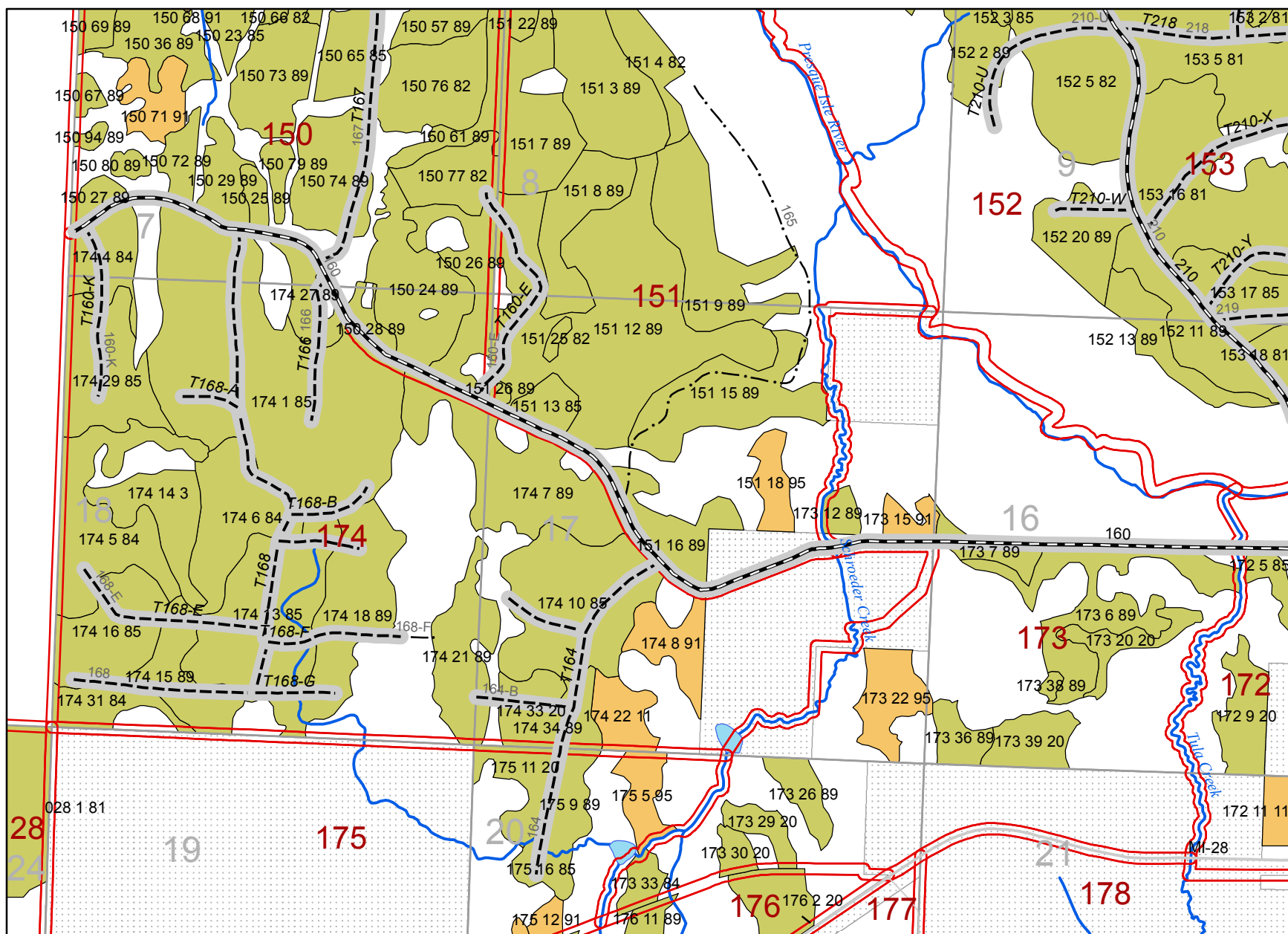
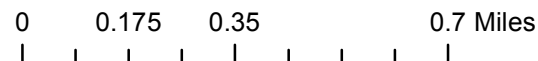


Survey Stands, Bid 4, Comps. 173, 174

Stands are labelled with compartment number, stand number and cover type code

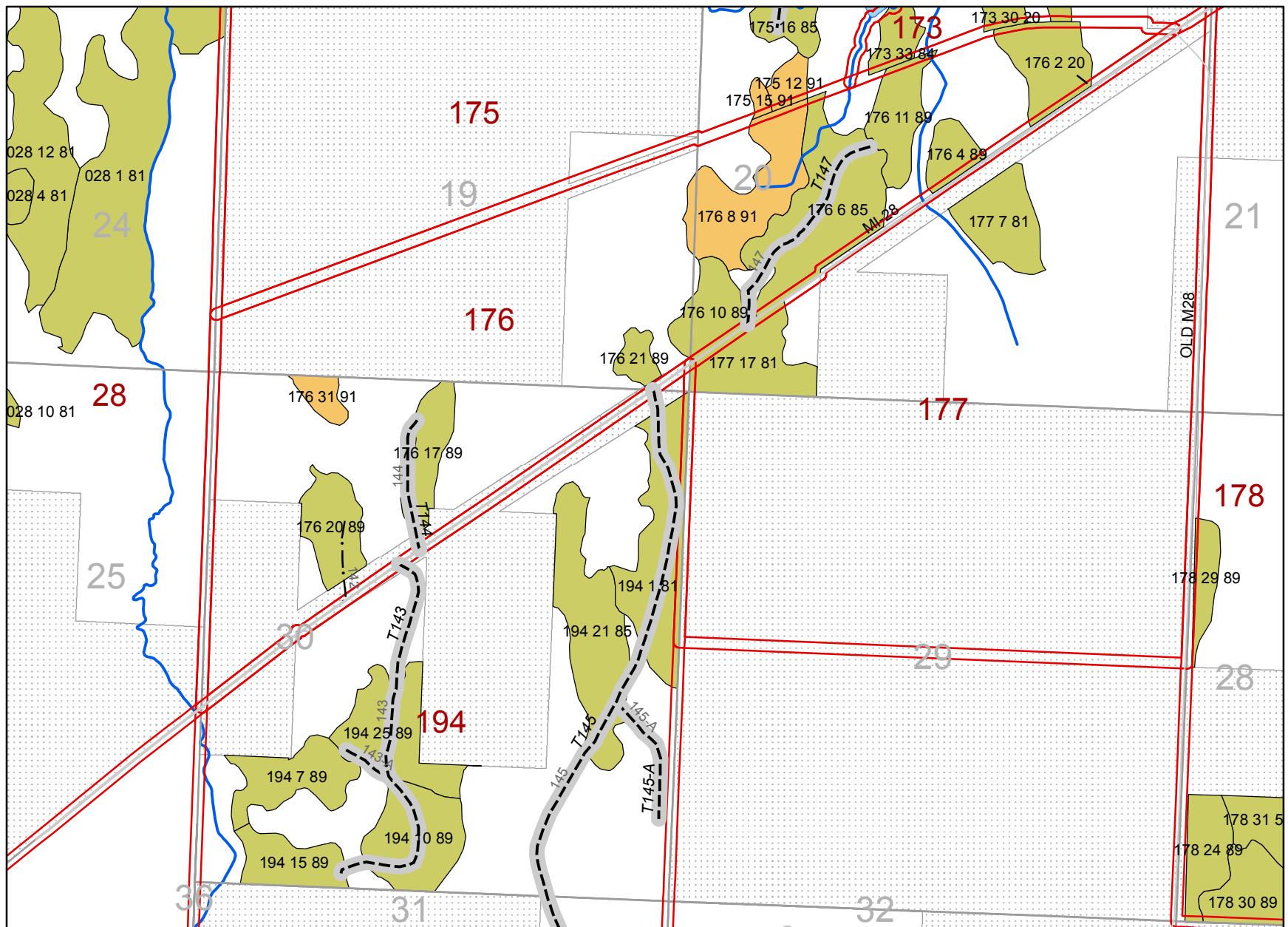


This map compiled 1/31/18 by S. Trull, Ottawa NF, using the most current and complete GIS data available. The GIS data displayed is intended for this project. Using the data other than for what it was created may yield inaccurate or misleading results.

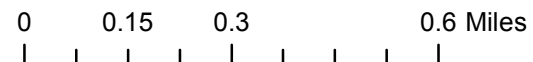


Survey Stands, Bid 4, Comps. 176, 177, 194

Stands are labelled with compartment number, stand number and cover type code

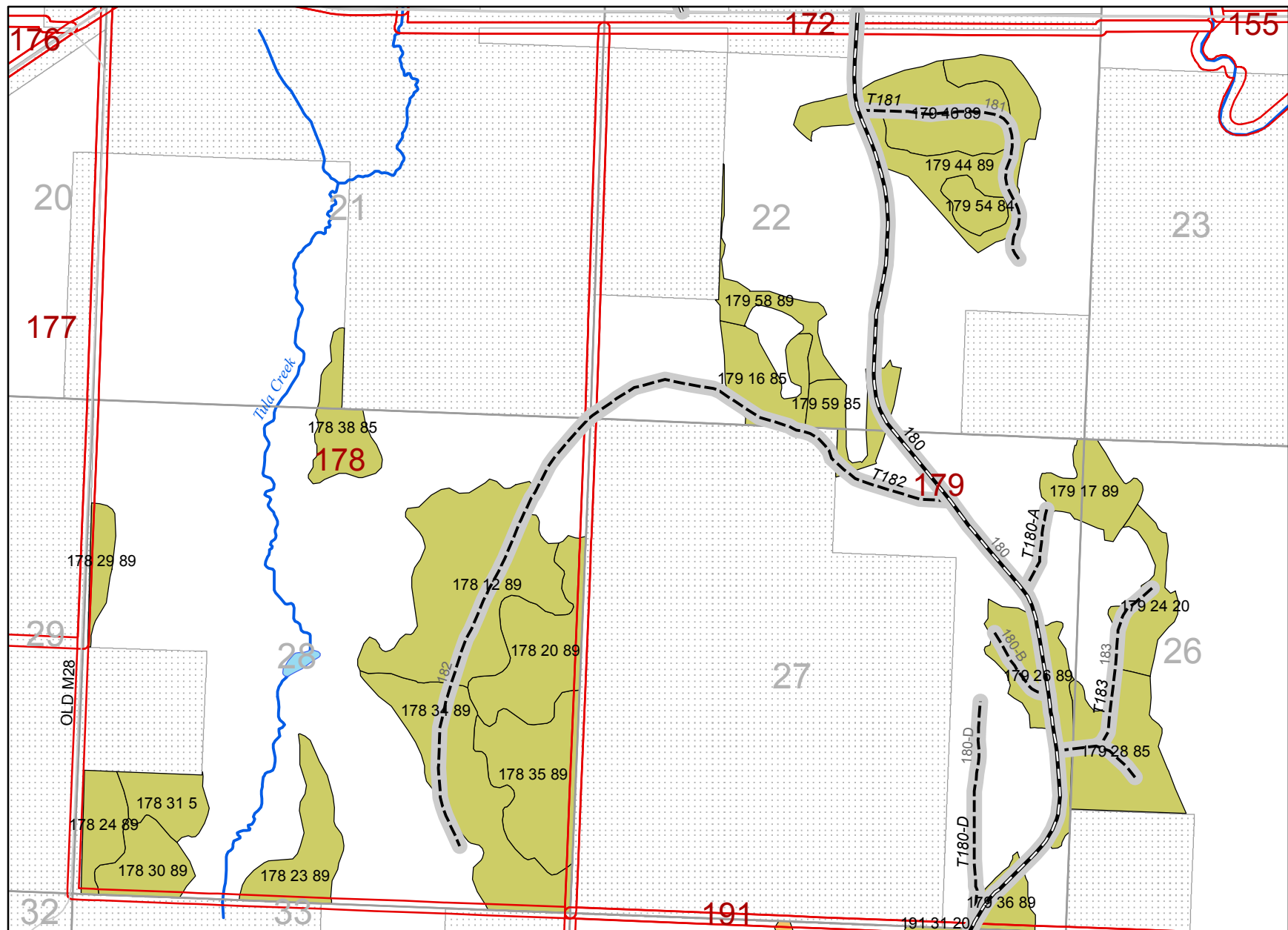


This map compiled 1/31/18 by S. Trull, Ottawa NF, using the most current and complete GIS data available. The GIS data displayed is intended for this project. Using the data other than for what it was created may yield inaccurate or misleading results.



Survey Stands, Bid 4, Comps. 178, 179

Stands are labelled with compartment number, stand number and cover type code



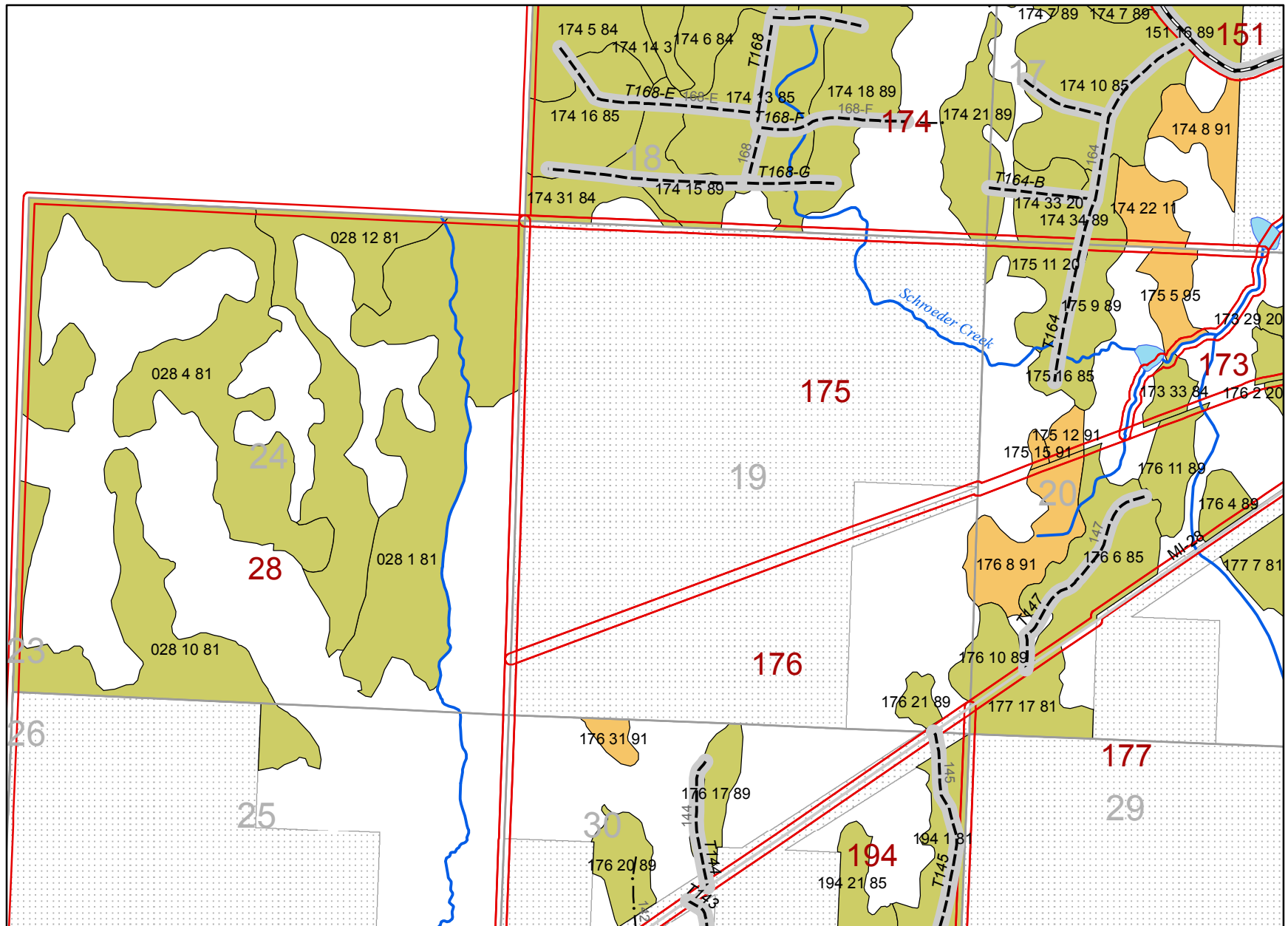
This map compiled 1/31/18 by S. Trull, Ottawa NF, using the most current and complete GIS data available. The GIS data displayed is intended for this project. Using the data other than for what it was created may yield inaccurate or misleading results.

0 0.15 0.3 0.6 Miles



Survey Stands, Bid 4, Comps. 28, 175

Stands are labelled with compartment number, stand number and cover type code



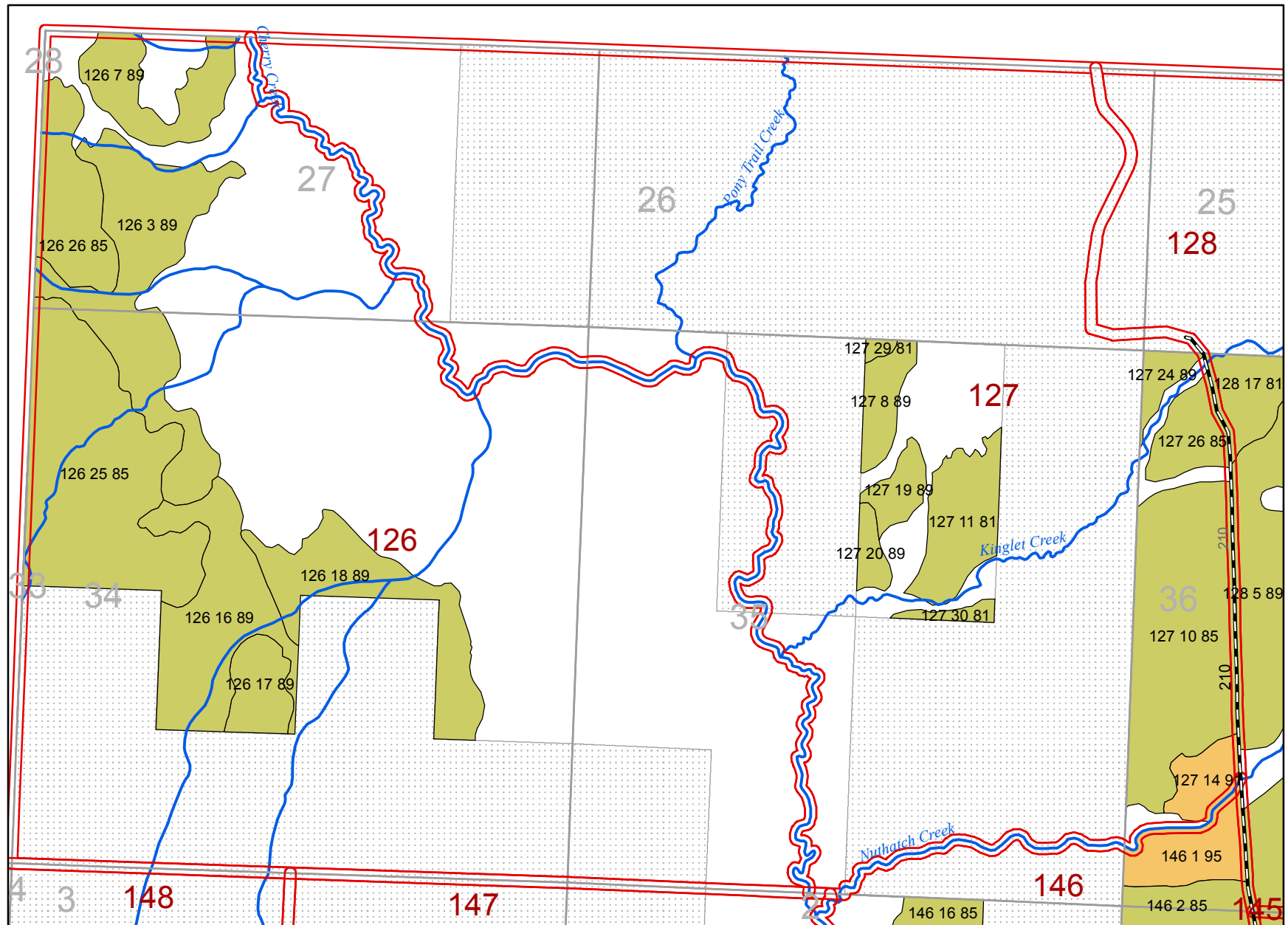
This map compiled 1/31/18 by S. Trull, Ottawa NF, using the most current and complete GIS data available. The GIS data displayed is intended for this project. Using the data other than for what it was created may yield inaccurate or misleading results.

0 0.15 0.3 0.6 Miles



Survey Stands, Bid 4, Comps.126, 127

Stands are labelled with compartment number, stand number and cover type code



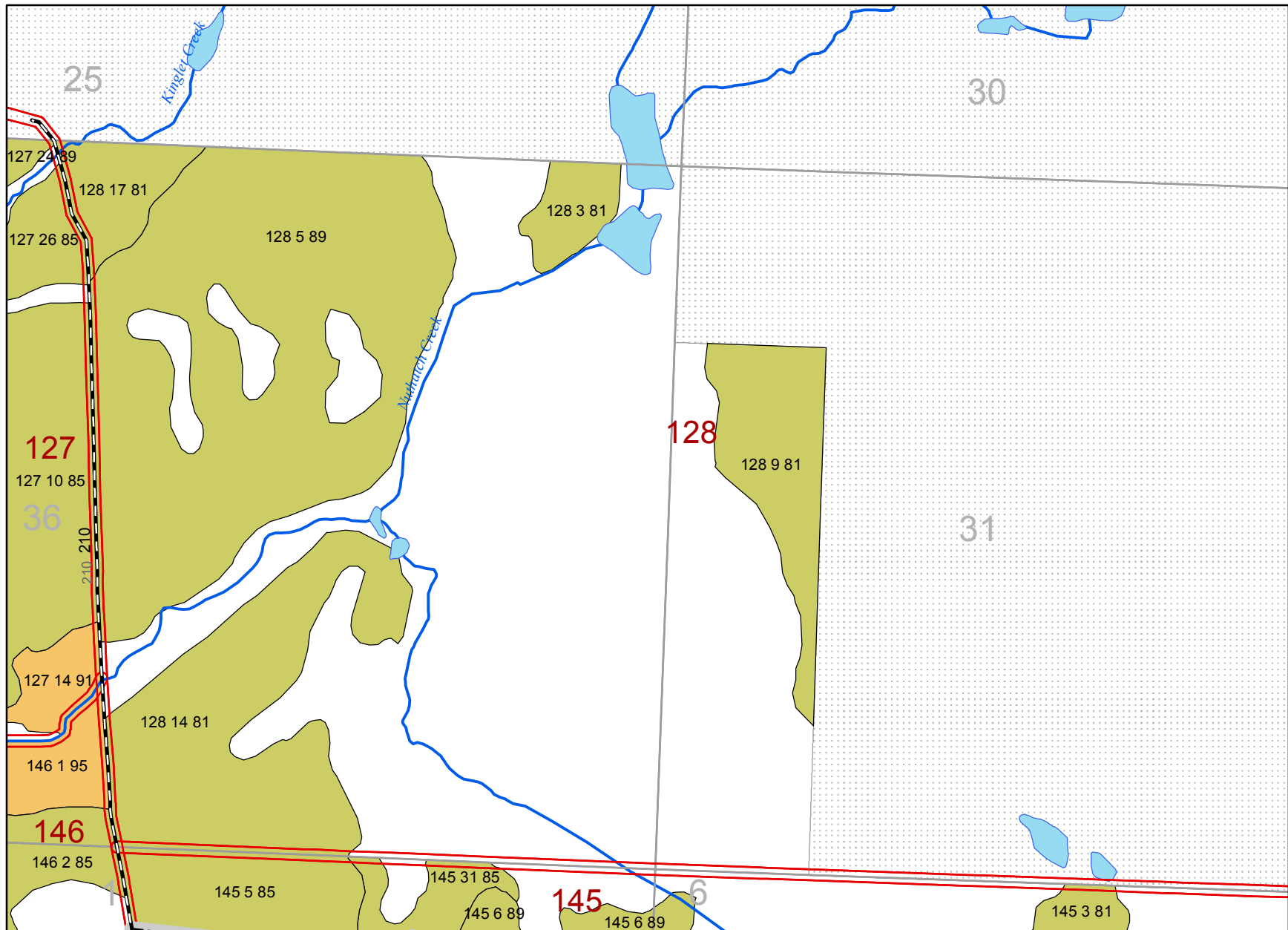
This map compiled 1/31/18 by S. Trull, Ottawa NF, using the most current and complete GIS data available. The GIS data displayed is intended for this project. Using the data other than for what it was created may yield inaccurate or misleading results.

0 0.125 0.25 0.5 Miles



Survey Stands, Bid 4, Comp. 128

Stands are labelled with compartment number, stand number and cover type code



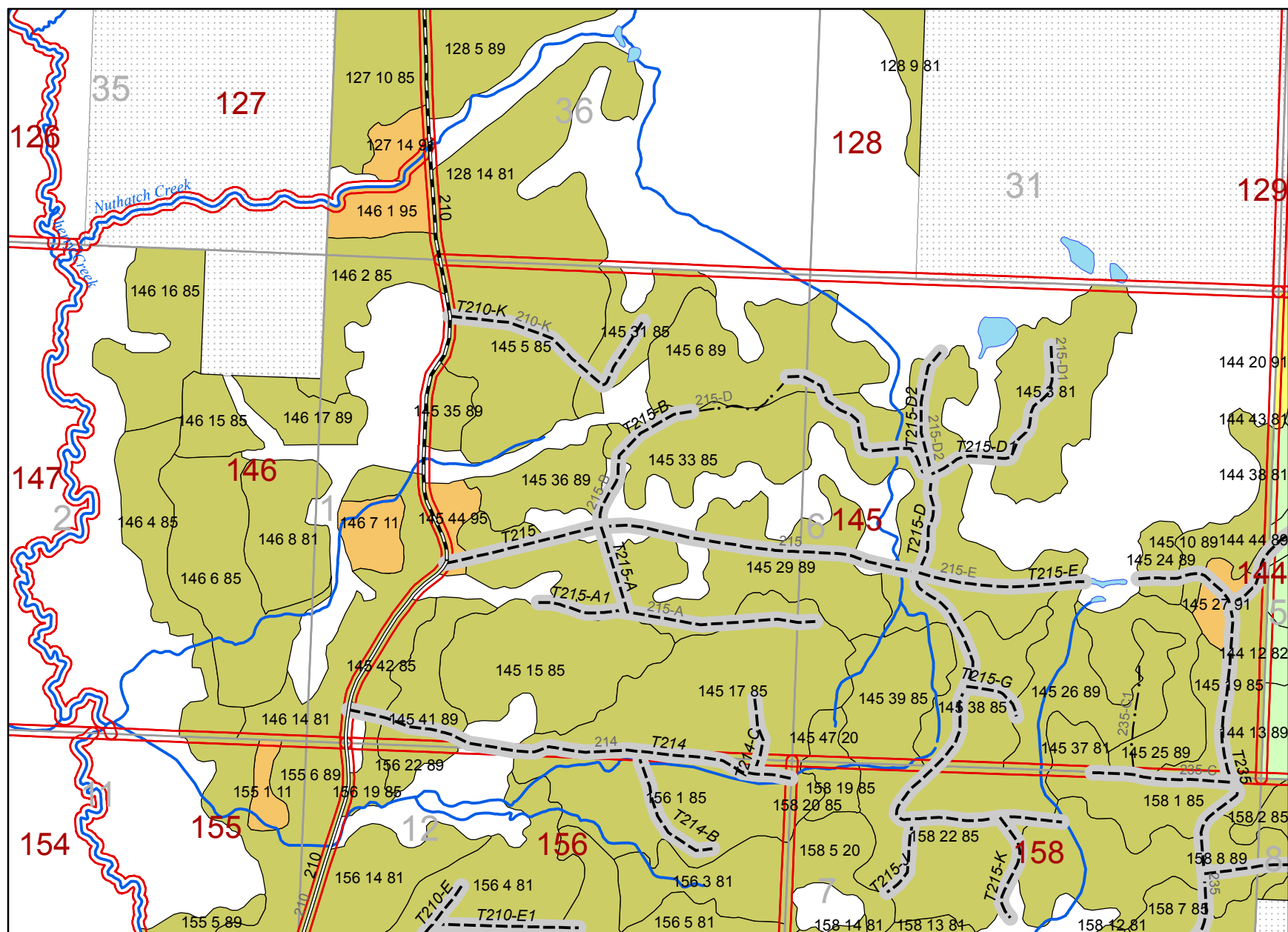
This map compiled 1/31/18 by S. Trull, Ottawa NF, using the most current and complete GIS data available. The GIS data displayed is intended for this project. Using the data other than for what it was created may yield inaccurate or misleading results.

0 0.1 0.2 0.4 Miles



Survey Stands, Bid 4, Comps. 145, 146

Stands are labelled with compartment number, stand number and cover type code



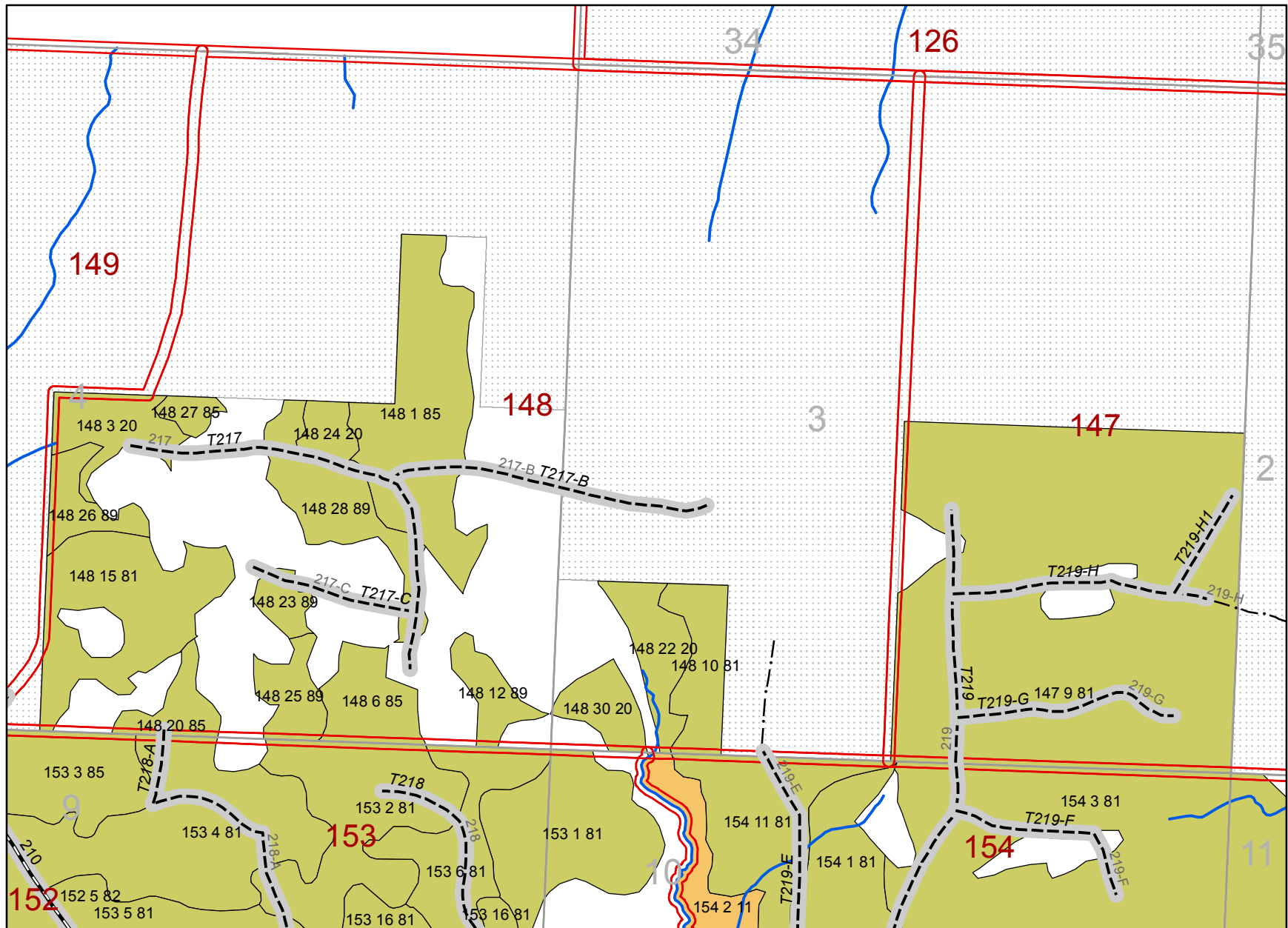
This map compiled 1/31/18 by S. Trull, Ottawa NF, using the most current and complete GIS data available. The GIS data displayed is intended for this project. Using the data other than for what it was created may yield inaccurate or misleading results.

0 0.15 0.3 0.6 Miles



Survey Stands, Bid 4, Comps.147, 148

Stands are labelled with compartment number, stand number and cover type code



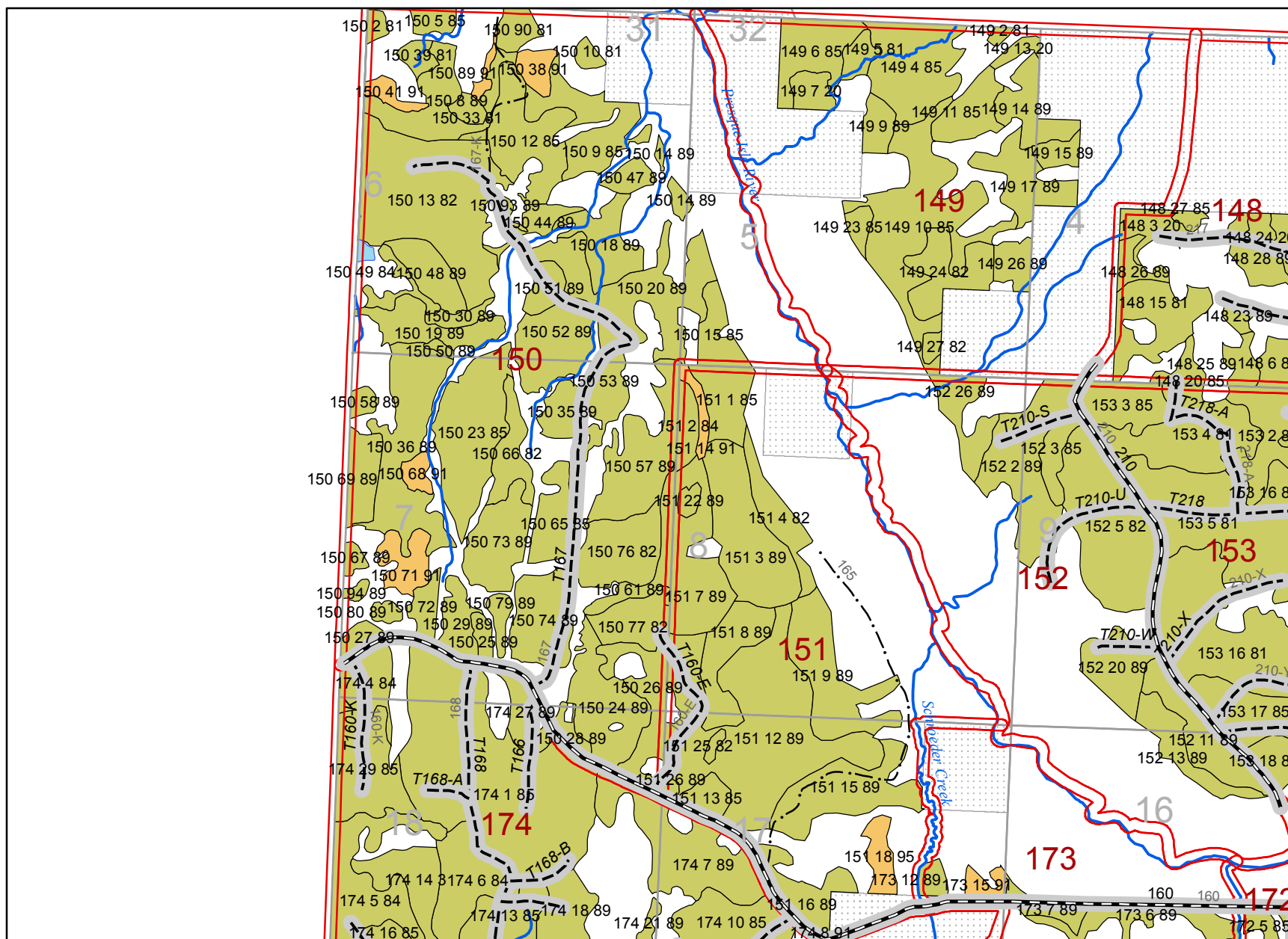
This map compiled 1/31/18 by S. Trull, Ottawa NF, using the most current and complete GIS data available. The GIS data displayed is intended for this project. Using the data other than for what it was created may yield inaccurate or misleading results.

0 0.1 0.2 0.4 Miles

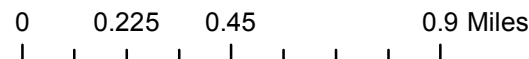


Survey Stands, Bid 4, Comps.149, 150, 151, 152

Stands are labelled with compartment number, stand number and cover type code

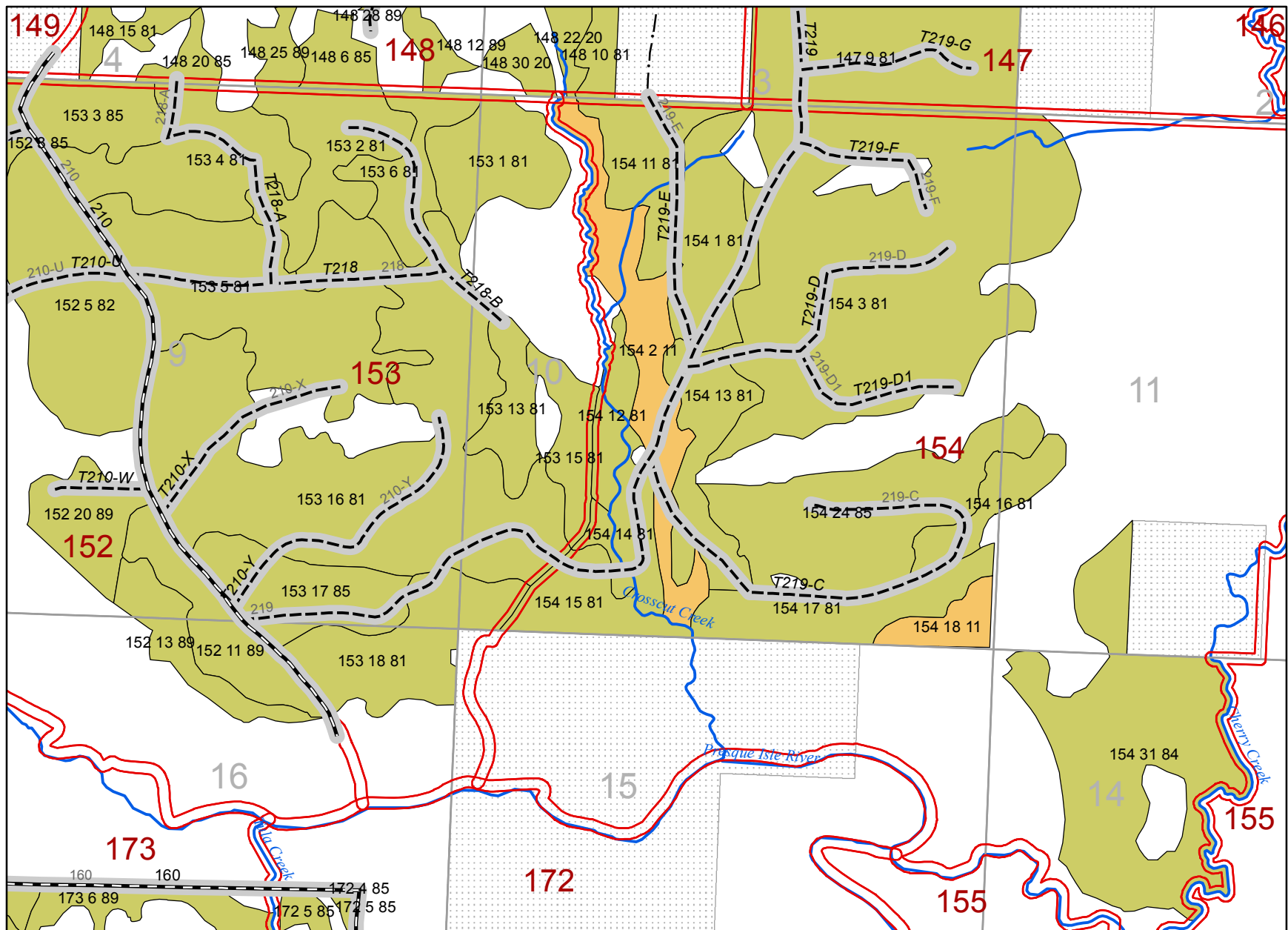


This map compiled 1/31/18 by S. Trull, Ottawa NF, using the most current and complete GIS data available. The GIS data displayed is intended for this project. Using the data other than for what it was created may yield inaccurate or misleading results.

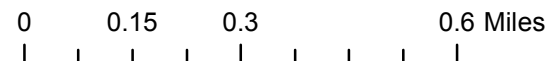


Survey Stands, Bid 4, Comps.153, 154

Stands are labelled with compartment number, stand number and cover type code

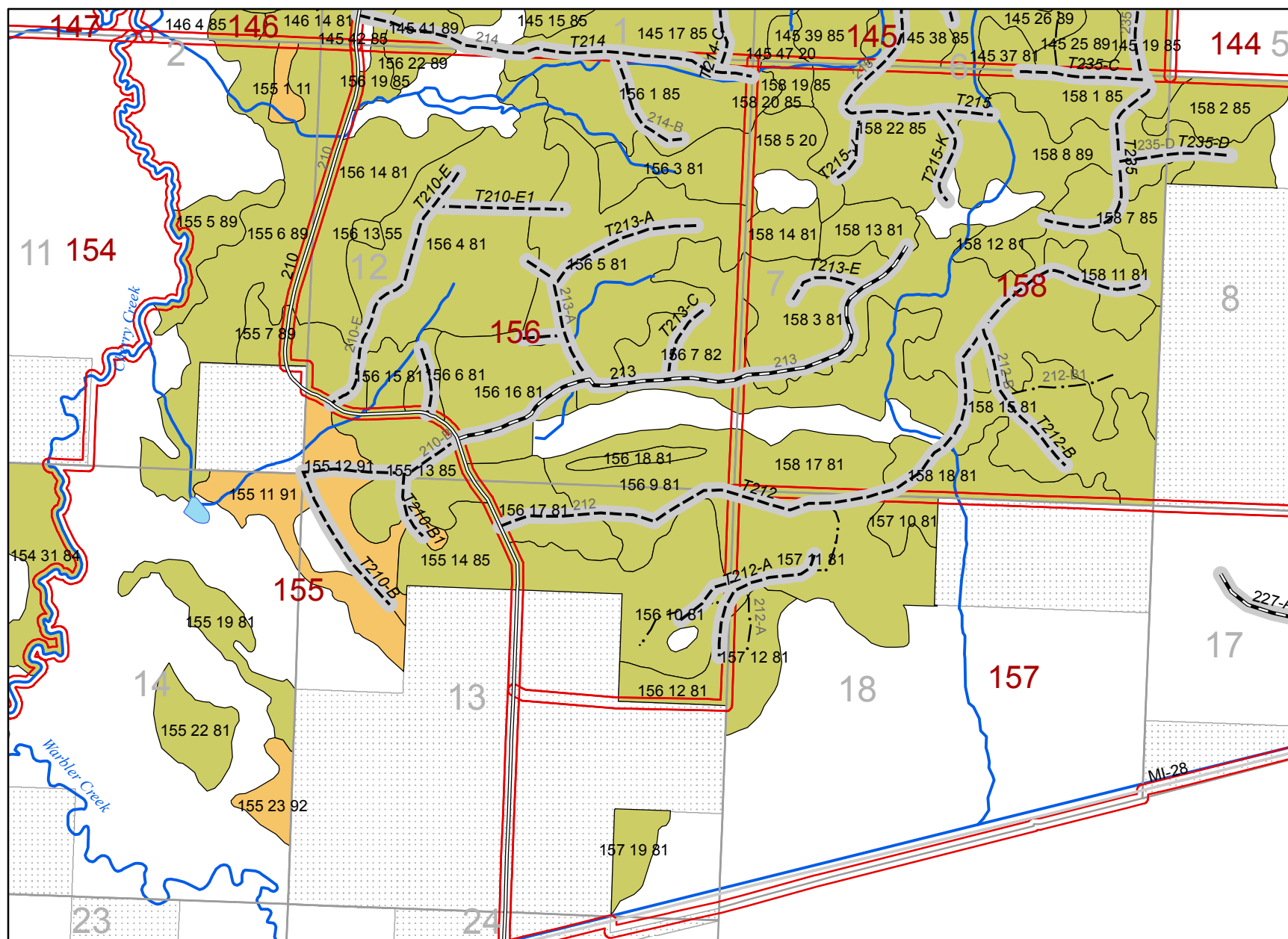


This map compiled 1/31/18 by S. Trull, Ottawa NF, using the most current and complete GIS data available. The GIS data displayed is intended for this project. Using the data other than for what it was created may yield inaccurate or misleading results.



Survey Stands, Bid 4, Comps. 155, 156, 157, 158

Stands are labelled with compartment number, stand number and cover type code

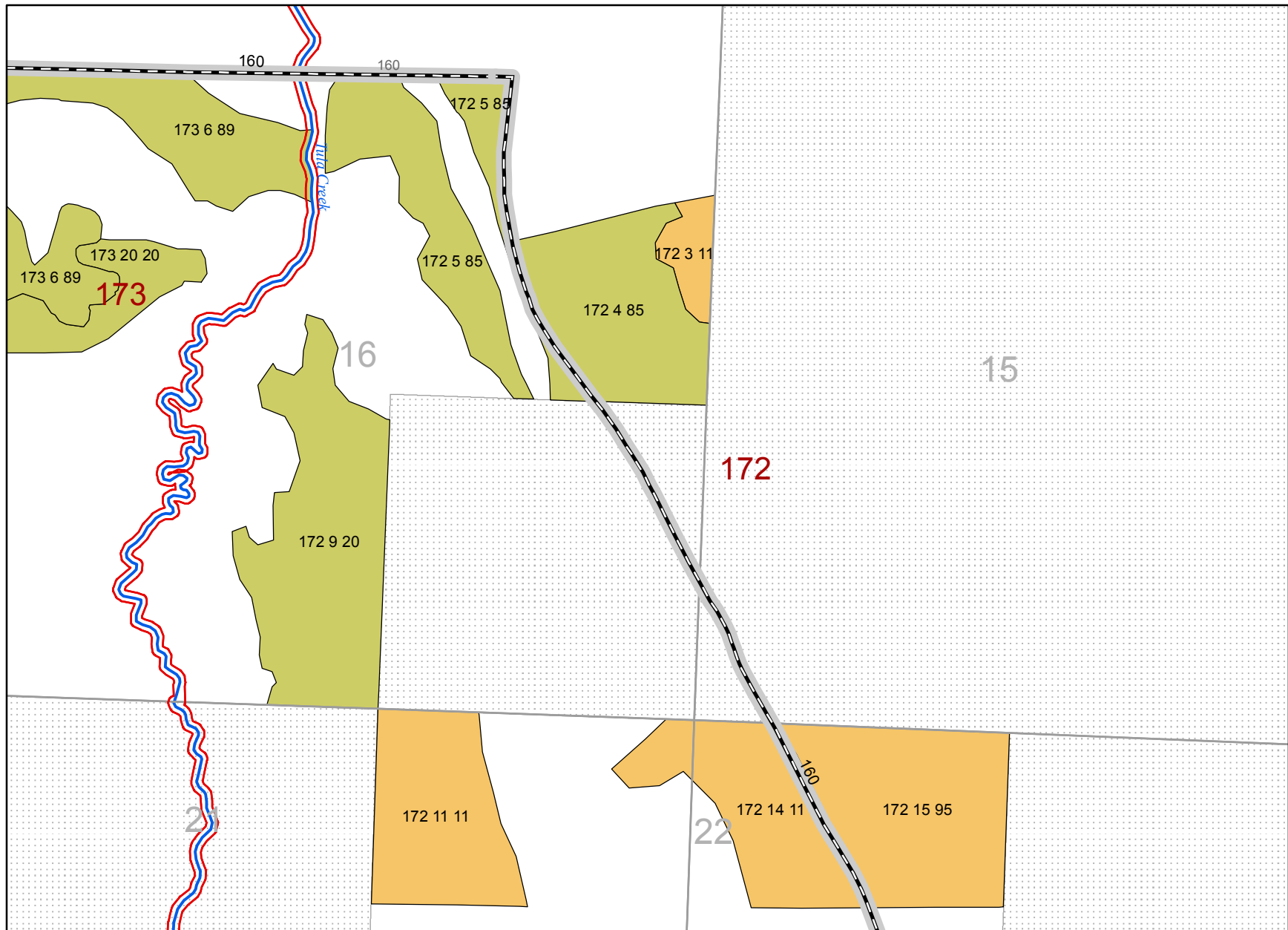


This map compiled 1/31/18 by S. Trull, Ottawa NF, using the most current and complete GIS data available. The GIS data displayed is intended for this project. Using the data other than for what it was created may yield inaccurate or misleading results.

0 0.175 0.35 0.7 Miles

Survey Stands, Bid 4, Comp.172

Stands are labelled with compartment number, stand number and cover type code



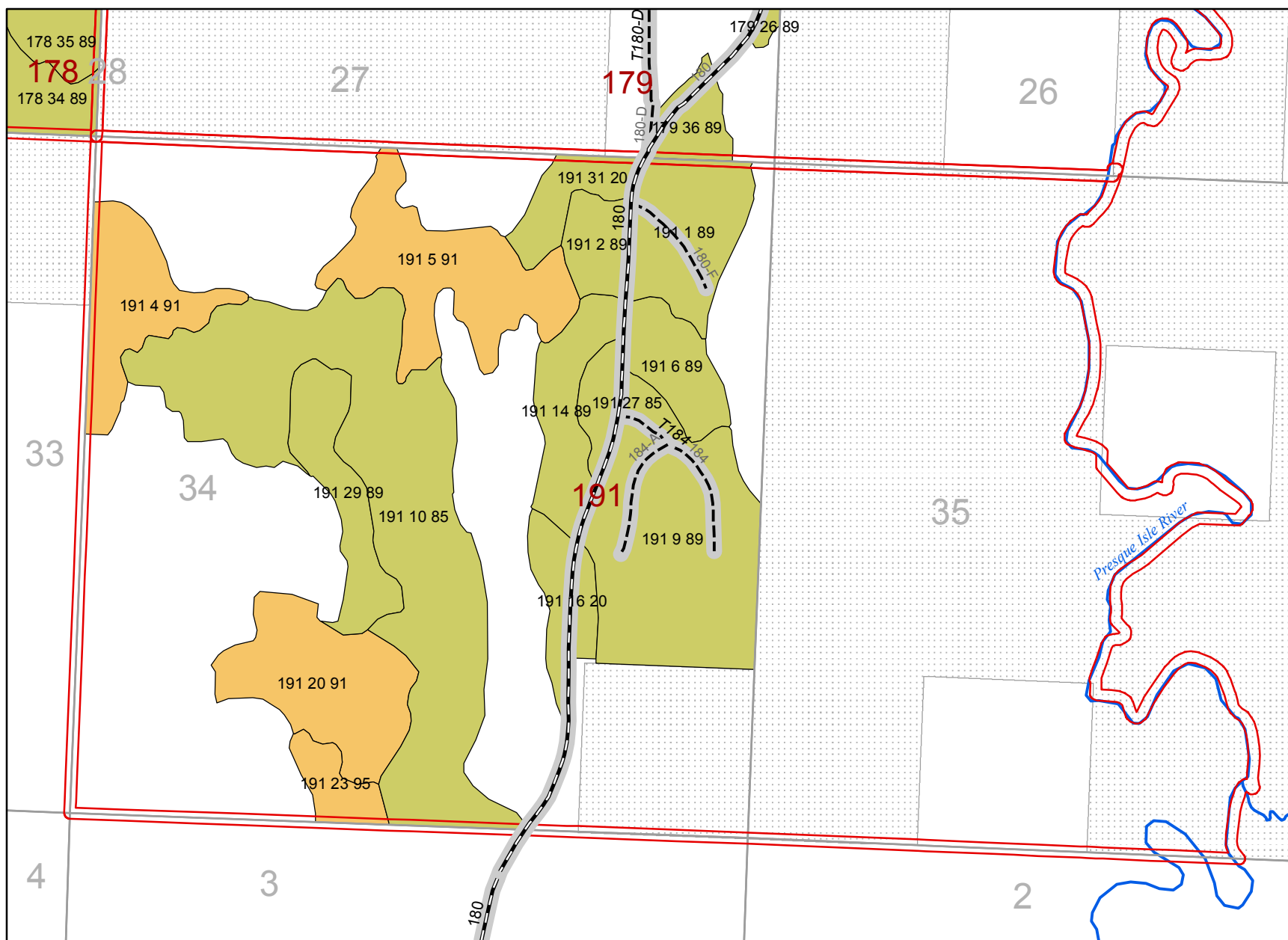
This map compiled 1/31/18 by S. Trull, Ottawa NF, using the most current and complete GIS data available. The GIS data displayed is intended for this project. Using the data other than for what it was created may yield inaccurate or misleading results.

0 0.05 0.1 0.2 Miles



Survey Stands, Bid 4, Comp. 191

Stands are labelled with compartment number, stand number and cover type code



This map compiled 1/31/18 by S. Trull, Ottawa NF, using the most current and complete GIS data available. The GIS data displayed is intended for this project. Using the data other than for what it was created may yield inaccurate or misleading results.

0 0.1 0.2 0.4 Miles

